

DEPARTMENT OF THE ARMY TECHNICAL MANUAL

**ORGANIZATIONAL MAINTENANCE REPAIR PARTS
AND SPECIAL TOOLS LISTS
CODE RECORDER RD-60/U
FSN 5805-164-7323**

**Headquarters, Department of the Army, Washington, D.C
31 August 1973**

Current as of February 1973

SECTION		Paragraph	Page
	I. INTRODUCTION		
	Scope	1-1	2
	General	1-2	2
	Explanation of columns	1-3	2
	Special information	1-4	4
	Location of repair parts	1-5	4
	Abbreviations (Not applicable)	1-6	4
	Reporting of equipment publication improvements	1-7	4
	II. PRESCRIBED LOAD ALLOWANCE (Not applicable)		
	III. REPAIR PARTS LIST		6
	IV. SPECIAL TOOLS, TEST AND SUPPORT EQUIPMENT (Not applicable)		
	V. INDEX-FEDERAL STOCK NUMBER AND REFERENCE NUMBER		
	CROSS-REFERENCE TO FIGURE AND ITEM NUMBER		8

*This manual supersedes TM 11-5805-253-20P, 27 September 1963.

SECTION I

INTRODUCTION

1 - 1 . Scope

This manual lists repair parts and special tools, required for the performance of organizational maintenance of the RD-60/U. The PCCN for the RD-60/U is GCMABB for all models.

1 - 2 . General

This repair parts and special tools list is divided into the following sections:

a. Prescribed Load Allowance (PLA)-Section II. Not applicable.

b. Repair Parts List-Section III. A list of repair parts authorized for the performance of maintenance at the organizational level. This repair parts list is arranged in alphabetical order.

c. Special Tools, Test and Support Equipment-Section IV Not applicable.

d Index-Federal Stock Number and Reference Number Cross-Reference to Figure and Item Number- Section V A list, in ascending numerical sequence, of all Federal stock numbers appearing in the listings, followed by a list, in alphameric sequence, of all reference numbers appearing in the listing. Federal stock number and reference numbers are cross-referenced to each illustration figure and item number or reference designation appearance.

1-3. Explanation of Columns

The following provides an explanation of columns in the tabular lists-

a. Source, Maintenance, and Recoverability Codes (SMR).

(1) *Source code.* Indicates the manner of acquiring support items for maintenance, repair, or overhaul of end items. Source codes are—

Code	Explanation
PA—	Item procured and stocked for anticipated or known usage.
PB—	Item procured and stocked for insurance purposes because essentiality dictates that a minimum quantity be available in the supply systems.
PC—	Item procured and stocked and which otherwise would be coded PA except that it is deteriorative in nature.
PD—	Support item, excluding support equipment, procured for initial issue or outfitting and stocked only for subsequent or additional initial issues or outfittings. Not subject to automatic replenishment.
PE—	Support equipment procured and stocked for initial issue or outfitting to specified maintenance repair activities.

Code

Explanation

PF—	Support equipment which will not be stocked but which will be centrally procured on demand.
PG—	Item procured and stocked to provide for sustained support for the life of the equipment. It is applied to an item peculiar to the equipment which because of probable discontinuance or shutdown of production facilities would prove uneconomical to reproduce at a later time.
KD—	An item of depot overhaul/repair kit and not purchased separately. Depot kit defined as a kit that provides items required at the time of overhaul or repair.
KF—	An item of a maintenance kit and not purchased separately. Maintenance kit defined as a kit that provides an item that can be replaced at organizational or direct support or general support levels of maintenance.
KB—	Item included in both a depot overhaul/repair kit and a maintenance kit.
MO—	Item to be manufactured or fabricated at organizational level.
MF—	Item to be manufactured or fabricated at direct support maintenance level.
MH—	Item to be manufactured or fabricated at general support maintenance level.
MD—	Item to be manufactured or fabricated at depot maintenance level.
AO—	Item to be assembled at organizational level.
AF—	Item to be assembled at direct support maintenance level.
AH—	Item to be assembled at general support maintenance level.
AD—	Item to be assembled at depot maintenance level.
XA—	Item is not procured or stocked because the requirements for the item will result in the replacement of the next higher assembly.
XB—	Item is not procured or stocked. If not available through salvage, requisition.
XC—	Installation drawing, diagram instruction sheet, field service drawing, that is identified by manufacturers' part number.
XD—	Support items can be requisitioned with justification.

NOTE

Cannibalization or salvage may be used as a source of supply for any items source coded above except those coded XA and aircraft support items as restricted by AR 700-42.

(2) Maintenance code. Maintenance codes are assigned to indicate the levels of maintenance authorized to USE and REPAIR support items. The maintenance codes are entered in the third and fourth positions of the Uniform SMR Code Format as follows—

(a) Use (third position). The maintenance code entered in the third position indicates the lowest maintenance level authorized to remove, replace, and use the support item. The maintenance code entered in the third position indicates one of the following levels of maintenance.

Code	Application
O—	Support item is removed, replaced, used at the organizational level of maintenance.

NOTE

A code "C" may be used in this position to denote crew or operator maintenance performed within organizational maintenance.

Code	Application/Explanation
F—	Support item is removed, replaced, used at the direct support maintenance level.
H—	Support item is removed, replaced, used at the general support maintenance.
D—	Support items that are removed, replaced, used at depot only.

(b) Repair (fourth position). The maintenance code entered in the fourth position indicates whether the item is to be repaired and identifies the lowest maintenance level with the capability to perform complete repair (i.e., all authorized maintenance functions). When a maintenance code is not used a dash (-) sign is entered. For multi-service equipment/systems or when a code is entered, this position will contain one of the following maintenance codes as assigned by the service(s) that require the code—

Code	Application/Explanation
O -	The lowest maintenance level capable of complete repair of the support item is the organizational level.
F -	The lowest maintenance level capable of complete repair of the support item is direct support.
H—	The lowest maintenance level capable of complete repair of the support item is general support.
D—	The lowest maintenance level capable of complete repair of the support item is the depot level.
L—	Repair restricted to designated Specialized Repair Activity.
Z -	Non-repairable. No repair is authorized.

Code	Application/Explanation
------	-------------------------

B- No repair is authorized. The item may be reconditioned by adjusting, lubricating, etc., at the user level. No parts or special tools are procured for the maintenance of this item.

(3) Recoverability code. Recoverability codes are assigned to support items to indicate the disposition action on unserviceable items. The recoverability code is entered in the fifth position of the uniform SMR Code Format as follows—

Code	Explanation
Z -	Nonrepairable item. When unserviceable, condemn and dispose at the level indicated in the first digit of the maintenance code.
O-	Repairable item. When uneconomically repairable, condemn and dispose at organizational level.
F -	Repairable item. When uneconomically repairable, condemn and dispose at the direct support level.
H -	Repairable item. When uneconomically repairable, condemn and dispose at the general support level.
D-	Repairable item. When beyond lower level repair capability, return to depot. Condemnation and disposal not authorized below depot level.
L -	Repairable item. Repair, condemnation, and disposal not authorized below depot/Specialized Repair Activity level.
A -	Item requires special handling or condemnation procedures because of specific reasons (i.e., precious metal content, high dollar value, critical material or hazardous material).

b. Federal Stock Number. Indicates the Federal stock number assigned to the item and will be used for requisitioning purposes.

c. Description, Indicates the Federal item name and a minimum description required to identify the item. The last line indicates the reference number followed by the applicable Federal Supply Code for Manufacturer (FSCM) in parentheses. The FSCM is used as an element in item identification to designate manufacturer or distributor or Government agency, etc., and is identified in SB 708-42.

d Unit of Measure (U/M). Indicates the standard or basic quantity by which the listed item is used in performing the actual maintenance function. This measure is expressed by a two-character alphabetical abbreviation; e.g., ea, in, pr, etc., and is the basis used to indicate quantities and allowances in subsequent columns. When the unit of measure

e. Quantity Incorporated in Unit, This column indicates the quantity of the item used in equipment. Subsequent appearances of the same item in the same assembly are indicated by the letters "REF".

f: 15-Day Organizational Maintenance Allowance.

(1) The repair parts indicated by an asterisk in the allowance column represent those authorized for use at the organizational category, and will be requisitioned on an "as required" basis, until stockage is based on demand in accordance with AR 710-2.

(2) Major Army commanders are authorized to approve reduction in the range of support items authorized for use in units within their commands. Recommendations for increase in range of items authorized for use will be forwarded to Commander, US Army Electronics Command, ATTN: AMSEL-MA-CR, Fort Monmouth, N.J., 07703. Any changes approved will be reflected in a revision to the RP-STL.

(3) Allowance quantities are indicated in the special tools list section for special tools, TMDE, and other equipment.

g. Illustration. This column is divided as follows:

(1) *Figure number.* Indicates the figure number of the illustration on which the item is shown in TM 111-5533.

(2) *Item number.* Indicates the item number or reference designation used to reference the item in the illustration.

1-4. Special Information

a Usable on codes are included in column 3. Uncoded items are applicable to all models. Identification of the usable on codes used in this publication are-

Code	Used on
ABH	RD-60/U

b. The following publication pertains to the RD-60/U and its components:

TM 11-5533 Code Recorder BD-60/U.

1-5. Location of Repair Parts

a. This manual contains one ~~cross~~-reference index (sec V) to be used to locate a repair part when the Federal stock number or reference number (manufacturer's part number) is known. The first column in the index is prepared in numerical or alphanumeric sequence in ascending order. The reference numbers (manufacturer's part numbers) are listed immediately following the last listed Federal stock number in the index of Federal stock numbers.

b. When the Federal stock number or reference number is known, follow the procedures given in (1) and (2) below.

(1) Refer to the index of Federal stock numbers (sec V) and locate the Federal stock number or reference number. The FSN and reference number are cross-referenced to the applicable figure and item number or reference designation.

(2) Refer to the repair parts list (sec III) and locate the figure number (col 7a) and item number or reference designation (col 7b) as noted in the FSN index.

c When the figure and item number or reference designation are known, scrutinize columns 7a and 7b of the repair parts list (sec III) until the item is located.

d. When the FSN, reference number, figure number, item number and reference designation are not known, scrutinize column 3 of the repair parts list (sec III), **which is** arranged in alphabetical order.

1-6. Abbreviations

Not applicable.

1-7. Reporting of Equipment Publication

Improvements

The reporting of errors, omissions, and recommendations for improving this publication by the individual user is encouraged. Reports should be submitted on DA Form 2028 (Recommended Changes to Publications) and forwarded **direct to Commander, US Army Electronics, ATTN: AMSEL-MA-CR, Fort Monmouth, N.J., 07703.**

The next printed page is 6

SECTION III

TM11-5805-253-20P

(1) SHE CODE	(2) FEDERAL STOCK NUMBER	(3) DESCRIPTION REFERENCE NUMBER & MFR CODE	(4) UNIT OF MEAS	(5) QTY. INC IN UNIT	(6) 15-DAY ORGANIZATIONAL MAINTENANCE ALW				(7) ILLUSTRATION	
					(a)	(b)	(c)	(d)	(e)	(f)
					1-5	6-20	21-50	51-100	FIGURE NO.	ITEM NO.
PAOZZ	5805-170-5268	ARM, RECORDER PEN NO-REF-DESIG CAPILLARY..... TUBING POINT FOR O-C15 IN W LINE 1.41 IN LG SC425725 (80063)	EA	1	*	*	*	*	1	
PAOZZ	5805-170-5269	ARM, RECORDER PEN NO-REF-DESIG CAPILLARY..... TUBING FOR O-025 IN W LINE 1.41 IN LG SCB25600 (80063)	EA	1	*	*	*	*	1	
PAOZZ	5805-544-7303	BEARING NO-REF-DESIG USED AS BEARING FOR COIL- ASSY PLASTIC 3-8 LG 10-32 HF2 THD FULLY THD SCB25504 (80063)	EA	2	*	*	*	*	11	
PAOZZ	4730-378-5594	BUSHING .025 FOR INK HOSE COUPLING 1-16 ID X. 3-32 OD X 5-16 IN LG SCC25708-5 (80063)	EA	1	*	*	*	*	7	025
PAOZZ	6145-164-8621	CABLE POWER, ELECTRICAL NO-REF-DESIG 2 COPPER. STRANDED WIRES 18 AWG 10FT LG (AUTHORIZED ALLOWANCES WILL BE MINIMUM OF OR A MULTIPLE OF 10FT)	FT	10	*	*	*	*	1	
PAOZZ	8110-664-3793	COO2MGF2-10-0380 (81349) CAN, TELESCOPE TOP NO-REF-DESIG FOR MAINT..... PARTS 3 X 7-16 SCC25700-6 (80063)	EA	1	*	*	*	*	1	
PACZZ	5920-351-7264	CAP, ELECTRICAL NO-REF-DESIG FOR FUSEHOLDER... E7, E8 9327 (10133)	EA	2	*	*	*	*	1	
PAOZZ	5805-356-3566	CLEANER, PEN NO-REF-DESIG 3 IN LG X 0-004 IN.. DIA SCC25700-1 (80063)	EA	5	*	*	*	*	1	
PAOZZ	5805-356-3567	CLEANER, PEN NO-REF-DESIG 3 IN LG X 0-008 IN.. DIA SCC25700-2 (80063)	EA	2	*	*	*	*	1	
PAOZZ	5805-356-3568	CLEANER, PEN NO-REF-DESIG 3 IN LG X 0.024 IN W. X 0.0025 INTK. SCC25700-3 (80063)	EA	4	*	*	*	*	1	
PAOZZ	5935-258-9001	CONNECTOR, PLUG, ELECTRICAL J1 2 CONT STRAIGHT SHAPE PAL 31-32 X 1-3-8 IN 7297 (63315)	EA	1	*	*	*	*	15	J1
PAOZZ	5935-283-3392	CONNECTOR, PLUG, ELECTRICAL P2 2 FLAT MALE.. PARALLEL CNT STRAIGHT SHAPE 1-17-32 X 3-4 X 25-32 IN SCDL69167 (80063)	EA	1	*	*	*	*	1	P2
PAOZZ	5935-199-0279	CONNECTOR, RECEPTACLE, ELECTRICAL P1 2 FLAT. MALE PARALLEL CNT SIG SOCKET S0178 (02660)	EA	1	*	*	*	*	15	P1
PAOZZ	5805-399-7299	COVER A1 FOR INK RESERVOIR 2-1-4 IN X 5-8.. IN 25617 (30350)	EA	1	*	*	*	*		A1
PAOZZ	5355-171-3402	DIAL 13 FOR CALIBRATING KNOB TYPE 1-13-16. X7-8 IN W-CALIBRATED SKIRT HR53 (42498)	EA	2	*	*	*	*	1	13
PAOZZ	5355-171-3402	DIAL 14 FOR CALIBRATING KNOB TYPE 1-13-16. X7-8 IN W-CALIBRATED SKIRT HR53 (42498)	EA	REF	*	*	*	*		14
PAOZZ	5960-188-8573	ELECTRON TUBE V8..... OD3 (81349)	EA	2	*	*	*	*	14	V8
PAOZZ	5960-188-8573	ELECTRON TUBE V9..... OD3 (81349)	EA	REF	*	*	*	*	14	V9
PAOZZ	5960-188-3949	ELECTRON TUBE V5..... 5V4G (81349)	EA	1	*	*	*	*	14	V5
PAOZZ	5960-243-8491	ELECTRON TUBE V2..... 6M6MGT (81349)	EA	1	*	*	*	*	14	V2
PAOZZ	5960-262-0202	ELECTRON TUBE V1..... 6SK7MA (81349)	EA	1	*	*	*	*	14	V1
PAOZZ	5960-262-0161	ELECTRON TUBE V4..... 6L6WB (81349)	EA	1	*	*	*	*	14	V4
PAOZZ	5960-188-3574	ELECTRON TUBE V3..... 6SJ7MGT (81349)	EA	1	*	*	*	*	14	V3
PAOZZ	5960-188-0880	ELECTRON TUBE V6..... 6X4W (81349)	EA	1	*	*	*	*	14	V6
PAOZZ	5960-503-4880	ELECTRON TUBE V7..... 0A2WA (81349)	EA	1	*	*	*	*	14	V7
PACZZ	5920-199-9484	FUSE, CARTRIDGE F2 2 AMP, 250V 413002 (75915)	EA	1	*	*	*	*	1	F2
PACZZ	5920-1969-3973	FUSE, CARTRIDGE FU-37 F1 3 AMP, 250V 413003 (75915)	EA	1	*	*	*	*	1	F1
PAOZZ	5355-160-6076	KNOB NO-REF-DESIG RD BLACK ALUMINUM 2-1-8 X. 15-16 IN SCB25757 (80063)	EA	1	*	*	*	*	1	
PACZZ	6240-179-1807	LAMP, GLOW I1 1-25 W 105-120 V MILL15098B (81349)	EA	2	*	*	*	*	15	I1
PACZZ	6240-179-1807	LAMP, GLOW I2 1-25 W 105-120 V MILL15058B (81349)	EA	REF	*	*	*	*	15	I2

LMC FORM

ORGANIZATIONAL REPAIR PARTS/TOOLS LIST

SECTION III

TM11-5805-253-20P

(1) SMR CODE	(2) FEDERAL STOCK NUMBER	(3) DESCRIPTION REFERENCE NUMBER & MFR CODE USABLE ON CODE	(4) UNIT OF MEAS	(5) QTY. INC IN UNIT	(6) 15-DAY ORGANIZATIONAL MAINTENANCE ALW				(7) ILLUSTRATION	
					(a) 1-5	(b) 6-20	(c) 21-50	(d) 51-100	(a) FIGURE NO.	(b) ITEM NO.
PAOZZ	6210-174-8866	LFNS, INDICATOR LIGHT NO-REF-DESIG WHITE 52-995 (72619)	EA	2	*	*	*	*	1	
PAOZZ	5805-170-5267	PEN, RECORDER O16 WIDE CAPILLARY TUBE POINT 0-040 IN PEN SCB25721 (80063)	EA	1	*	*	*	*	1	O16
PAOZZ	5805-651-5449	SCREW NO-REF-DESIG USED AS BEARING FOR PEN ... SCB25575 (80063)	EA	2	*	*	*	*	18	
PAOZZ	5335-407-8487	SCREW, EXTERNALLY RELIEVED BODY NO-REF-DESIG... FIL HD STEEL 1-4 IN - 20 THD 13-64 IN HSLOTTED DRIVE SCB25651 (80063)	EA	2	*	*	*	*	18	
PAOZZ	5305-4078484	SCREW, EXTERNALLY RELIEVED BODY NO-REF-DESIG... FIL HD STEEL 1-4 IN - 20 THD 7-16 7-32 IN SLOTTED DRIVE SCB25650 (80063)	EA	2	*	*	*	*	18	
PAOZZ	5305-407-8743	SCREW, MACHINE NO-REF-DESIG BIND HD STEEL 6- 32NC2 21-64 IN LG SCB25753 (80063)	EA	1	*	*	*	*	13	
PAOZZ	5305-408-0042	SET SCREW NO-REF-DESIG SLOTTED DRIVE STEEL .. 8-32NC2 1 IN LG SCB525649 (80063)	EA	1	*	*	*	*	13	
PAOZZ	5305-407-9858	SET SCREW NO-REF-DESIG SLOTTED DRIVE 5-40NC2 15-16 IN LG SCB25611 (80063)	EA	1	*	*	*	*	13	
PAOZZ	5305-322-4558	SET SCREW NO-REF-DESIG SLOTTED DRIVE 5-50NC2 1 IN LG G/A SC325610 (80063)	EA	1	*	*	*	*	13	
PAOZZ	5960-570-5584	SHIELD, ELECTRON TUBE E5 CAD PL RD OPEN... TOP 13-16 X2-1-4 13A12564P24-5 (71785)	EA	2	*	*	*	*	14	E5
PAOZZ	5960-570-5584	SHIELD, ELECTRON TUBE E6 CAD PL RD OPEN... TOP 13-16 X2-1-4 13A12564P24-5 (71785)	EA	REF	*	*	*	*	14	E6
PAOZZ	5305-407-9180	THUMB SCREW NO-REF-DESIG KNURLED THUMB HEAD .. 1-4 IN 20NC2 1-2 IN LG UNDERHEAD SCB25614 (80063)	EA	1	*	*	*	*	7	
PAOZZ	5305-407-9175	THUMB SCREW NO-REF-DESIG KNURLED THUMBHEAD ... #10-32NF2 7-8 IN LG UNDERHEAD SCB25744 (80063)	EA	1	*	*	*	*	7	
PAOZZ	5305-407-9173	THUMBSCREW NO-REF-DESIG KNURLED THUMB HEAD ... 21-32 IN LG UNDERHEAD SCB25742 (80063)	EA	1	*	*	*	*	7	
PAOZZ	5305-207-7725	THUMBSCREW H25 KNURLED THUMB HEAD 6-32NC2 .. 15-16 LG 1-2 DIA X 3-16 IN H. SCB25550 (80063)	EA	1	*	*	*	*	7	H25
PAOZZ	5805-356-2639	WHEEL, FRICTION DRIVE O1 FRICTION FOR VAR... SPEED DRIVE 2-1-2 DIA X 1 IN DIA HOLE X 3-16 IN THK SCB25664 (80063)	EA	1	*	*	*	*	13	O1

SECTION V

INDEX - FEDERAL STOCK NUMBER AND REFERENCE NUMBER
CROSS-REFERENCE TO FIGURE AND ITEM NUMBER

STOCK NUMBER	FIGURE NO.	ITEM NO.	STOCK NUMBER	FIGURE NO.	ITEM NO.
6220-378-5994	7	025	5805-651-5449	18	
5385-207-7725	7	H25	5920-199-3973	1	F1
5305-322-4558	13		5920-199-9484	1	F2
5305-407-8484	18		5920-351-7264	1	
5305-407-8487	18		5935-199-0279	15	P1
5305-407-8743	13		5935-258+9001	15	J1
5305-604-9173	7		5935-283-3392	1	P2
5305-407-9175	7		5960-188-0880	14	V6
5305-407-9180	7		5960-180-3574	14	V3
5305-407-9858	13		5960-188-3949	14	V5
5305-408-0042	13		5960-188-8573	14	V8
5355-160-6076	1		5960-188-8573	14	V9
5355-171-3402	1	14	5960-248-8491	14	V2
5355-171-3402	1	13	5960-262-0161	14	V4
5805-170-5267	1	016	5960-262-0202	14	V1
5805-170-5268	1		5960-503-4880	14	V7
5805-170-5269	1		5960-570-5584	14	E5
5805-356-2639	13	01	5960-570-5584	14	E6
5805-356-3566	1		6145-164-6621	1	
5805-356-3567	1		6210-174-8866	1	
5805-356-3568	1		6240-179-1807	15	I1
5805-399-7299	1	A1	6240-179-1807	15	I2
5805-546-7303	11		8110-664-3793	1	

By Order of the Secretary of the Army:

CREIGHTON W. ABRAMS
General, United States Army
Chief of Staff

Official:

VERNE L. BOWERS
Major General, United States Army
The Adjutant General

Distribution:

Active Army:

USASA (2)
CNGB (1)
ACSC-E (2)
USAARENBD (2)
USAMB (10)
AMC (1)
FORSCOM (5)
ARADCOM (2)
ARADCOM Rgn (2)
OS Maj Comd (4)
LOGCOMDS (5)
MICOM (2)
TECOM (2)
USASTRATCOM (4)
HISA (ECOM) (18)
MDW (1)
Armies (2)
Corps (2)
Svc Colleges (2)
USASESS (5)
USAADS (2)
USAFAS (2)
USAARMS (2)
USAIS (2)
USAES (2)
USAINTS (3)
USACDCEC (5)

Instl (2) except
Fort Gordon (10)
Fort Huachuca (10)
Fort Carson (10)
WSMR (2)
Army Dep (2) except
LBAD (14)
SAAD (30)
TOAD (14)
LEAD (7)
ATAD (10)
USA Dep (2)
Sig Sec USA Dep (2)
Sig Dep (5)
Sig FLDMS (1)
USAERDAA (1)
USAERDAW (1)
MAAG (1)
USARMIS (1)
Ft Richardson (ECOM Ofc) (2)
WRAMC (1)
Units org under fol TOE:
(1 copy each)
11-158
29-134
29-136

NG: None

USAR: None

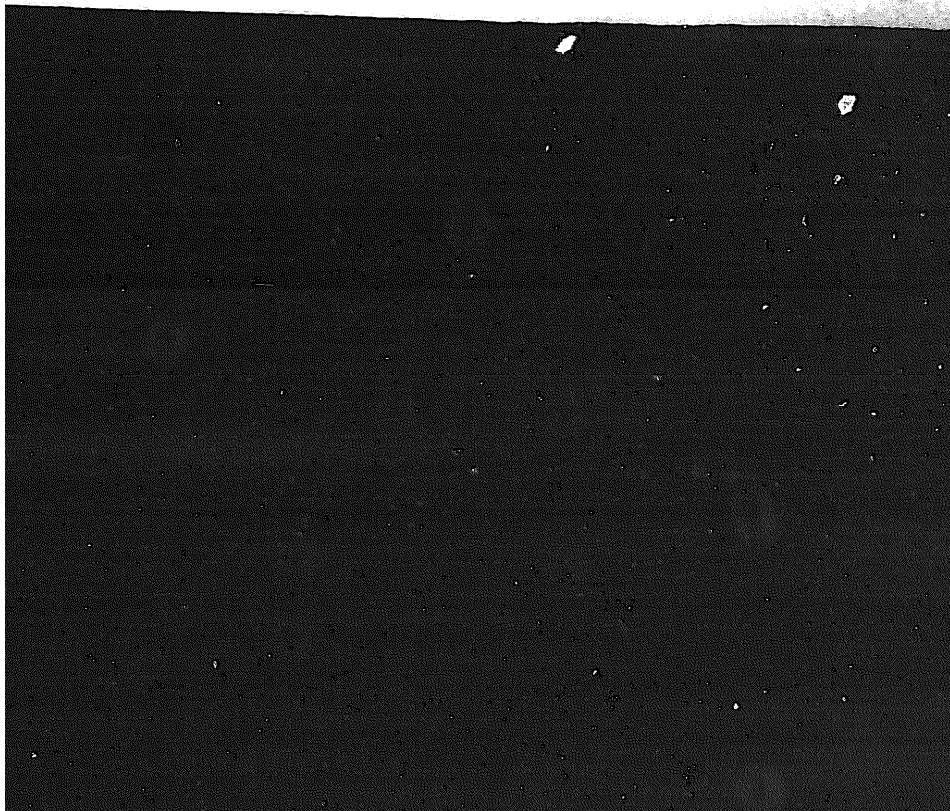
For explanation of abbreviations used, see AR 310-50.

END

10-20-82

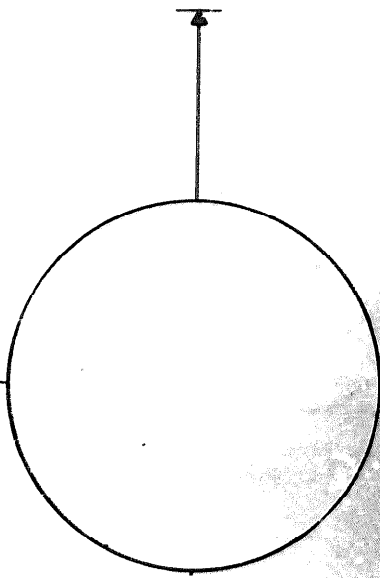
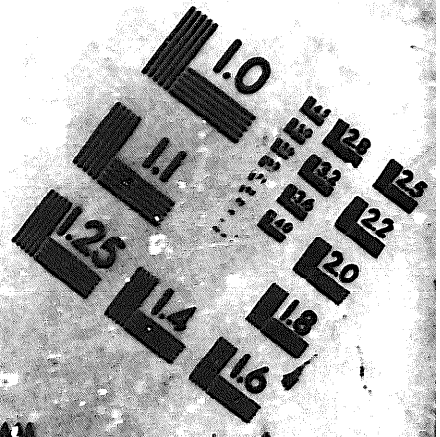
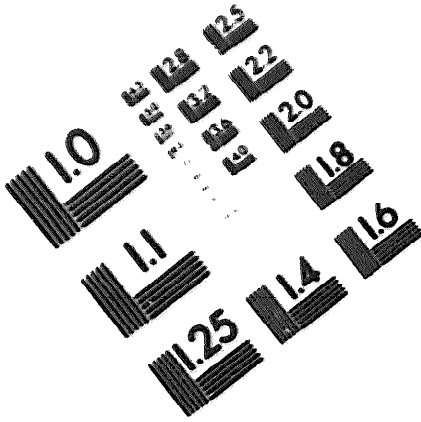
DATE





DEPARTMENT OF THE ARMY

MICROFORM
TEST TARGET



1.0 mm (ø = 81 mm)

ABCDEFGHIJKLMN OPQRSTUVWXYZ 1234567890
abcd efghijklmnopqrstuvwxyz %& / # 1/2 1/4 — = + x & @ *

1.5 mm (ø = 1.09 mm)

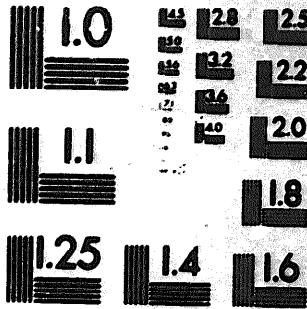
ABCDEFGHIJKLMN OPQRSTUVWXYZ 1234567890
abcd efghijklmnopqrstuvwxyz %& / # 1/2 1/4 — = + x & @ *

2.0 mm (ø = 1.37 mm)

ABCDEFGHIJKLMN OPQRSTUVWXYZ
abcd efghijklmnopqrstuvwxyz
1234567890 %& / # 1/2 1/4 — = + x & @ *

2.5 mm (ø = 1.77 mm)

ABCDEFGHIJKLMN OPQRSTUVWXYZ
abcd efghijklmnopqrstuvwxyz
1234567890 %& / # 1/2 1/4 — = + x & @ *



1.0 mm (ø = 81 mm)

ABCDEFGHIJKLMN OPQRSTUVWXYZ 1234567890
abcd efghijklmnopqrstuvwxyz %& / # 1/2 1/4 — = + x & @ *

1.5 mm (ø = 1.09 mm)

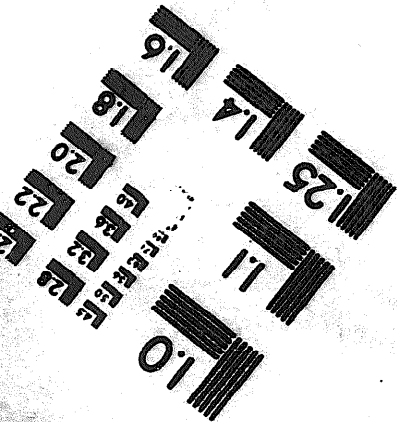
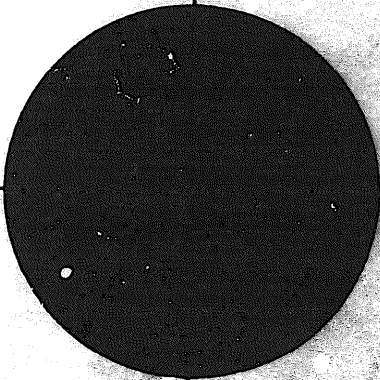
ABCDEFGHIJKLMN OPQRSTUVWXYZ 1234567890
abcd efghijklmnopqrstuvwxyz %& / # 1/2 1/4 — = + x & @ *

2.0 mm (ø = 1.37 mm)

ABCDEFGHIJKLMN OPQRSTUVWXYZ
abcd efghijklmnopqrstuvwxyz
1234567890 %& / # 1/2 1/4 — = + x & @ *

2.5 mm (ø = 1.77 mm)

ABCDEFGHIJKLMN OPQRSTUVWXYZ
abcd efghijklmnopqrstuvwxyz
1234567890 %& / # 1/2 1/4 — = + x & @ *



250 MM